



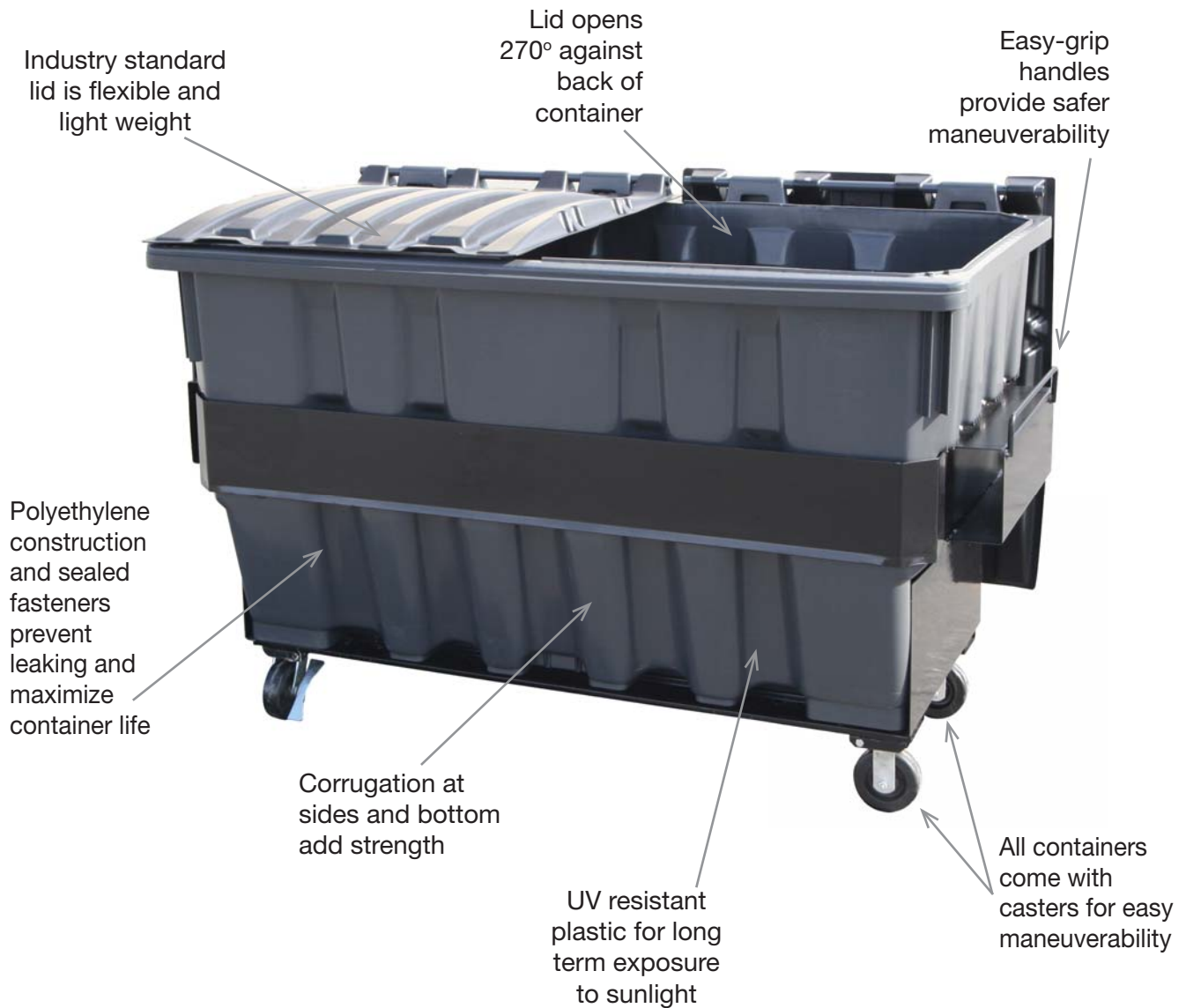
Steelite



SteelLite

The Best Of Plastic And Steel In One Container

- Plastic molded body is surrounded by a steel frame and base
- Steel frame around and under container body ensures stable lifting
- Body made of strong, durable molded plastic construction
- Weighs significantly less than same-size steel containers, improving worker safety
- Liquids inside never touch the steel, preventing rust and corrosion issues





Otto Plastic Body

+



Steel Frame

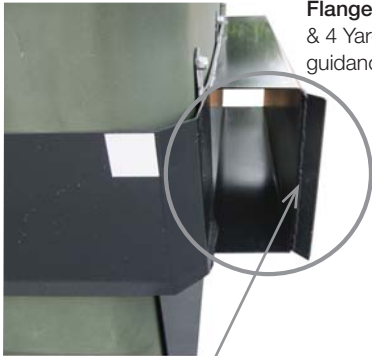
=



SteelLite

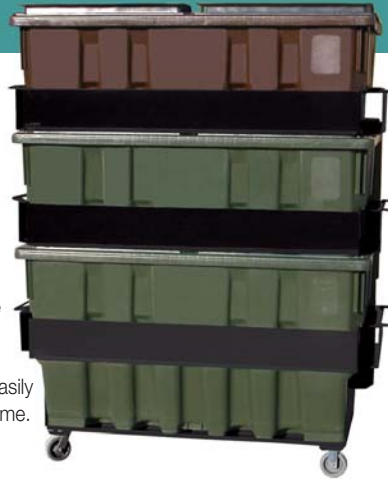
Features

Flanged Lift Pockets on 3 & 4 Yard SteelLites assist fork guidance during collection.



Coated Steel Pocket Guides are standard on all SteelLite front load containers for added protection during fork entry. Pocket inside dimensions are maximum height. Pockets installed at high point for easy fork entry.

Fully Stackable with six points of attachment allow container to be easily removed from frame.

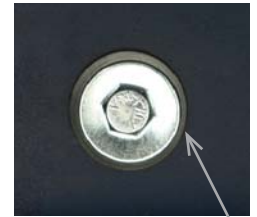


The 1 1/2" Solid Steel Trunnion Bar on the SteelLite Rear Load is supported with gussets to prevent damage when lifting heavy loads.

Corrugated Bottom And Sides provide strength.



Quick Change Caster Plates improve replacement efficiency. Steel support channels distribute heavy loads evenly across the container floor.



Standard Oversized Washer reinforced with separate rubber washer prevents leakage at container base.

Customize Your Container

- Manual and Gravity lock options available on front load containers
- For additional customizations, contact your Area Manager



Available Colors

The SteelLite container is available in 6 standard colors. SteelLite lids are black and complement all container colors.



Green - 56



Forest Green - 65



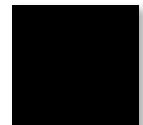
Dark Blue - 68



Brown - 63



Dark Gray - 50



Black - 60

Colors as shown in this document may differ slightly from the actual product.

Wheel Features

- Reinforced caster mounting for increased strength and durability
- Quick release caster plate allows for fast caster replacement from outside of the container
- Rounded urethane tread on casters is quiet and easy to roll
- 4" caster plates prevent puncturing in container bottom and have single-bolt release
- Standard 6" casters



Steelite



4 YARD FL



3 YARD FL



2 YARD FL



2 YARD RL

Container Specifications

MODEL	WIDTH	LOAD HEIGHT	MAX. HEIGHT	DEPTH	LOAD RATING
4 YARD FL STL	80 1/2"	57 1/2"	72 1/2"	56 1/2"	3200 LBS.
3 YARD FL STL	80 1/2"	54 1/2"	62 1/2"	54 1/2"	2400 LBS.
2 YARD FL STL	83 1/2"	51 1/2"	52"	42 1/2"	1600 LBS.
2 YARD RL STL	78"	50 1/2"	50 1/2"	50"	1600 LBS.

Container specifications vary slightly based on product mold. Height includes casters. Width includes lift pockets. Measurements reflect maximum dimensions.

Shipping Information

MODEL	ASSEMBLY WEIGHT	STACK HEIGHT	T/L QTY (53' TRUCK)	LTL STACKING AND LTL MAX. QTY	LID DIMENSIONS (W x L)
4 YARD FL STL	581 LBS.	2 HIGH	20	VARIES BY ORDER	36 x 58
3 YARD FL STL	472 LBS.	2° HIGH	20	VARIES BY ORDER	36 x 54
2 YARD FL STL	320 LBS.	3 HIGH	45	VARIES BY ORDER	38 x 41
2 YARD RL STL	367 LBS.	4 HIGH	30	VARIES BY ORDER	31 x 49

Shipping information is estimated and varies slightly based on product mold and product location. *For maximum shipping capacity, some assembly is required.

Otto Environmental Systems North America, Inc.

12700 General Drive, Charlotte, North Carolina 28273
800-795-OTTO (6886) • info@otto-usa.com • otto-usa.com

© Otto Environmental Systems North America, Inc.



Full Service Solutions